

21.05.2026

# Sold production of industry in April 2026<sup>1</sup>

**↑ 3.1%**

Increase in sold production of industry compared to April 2025

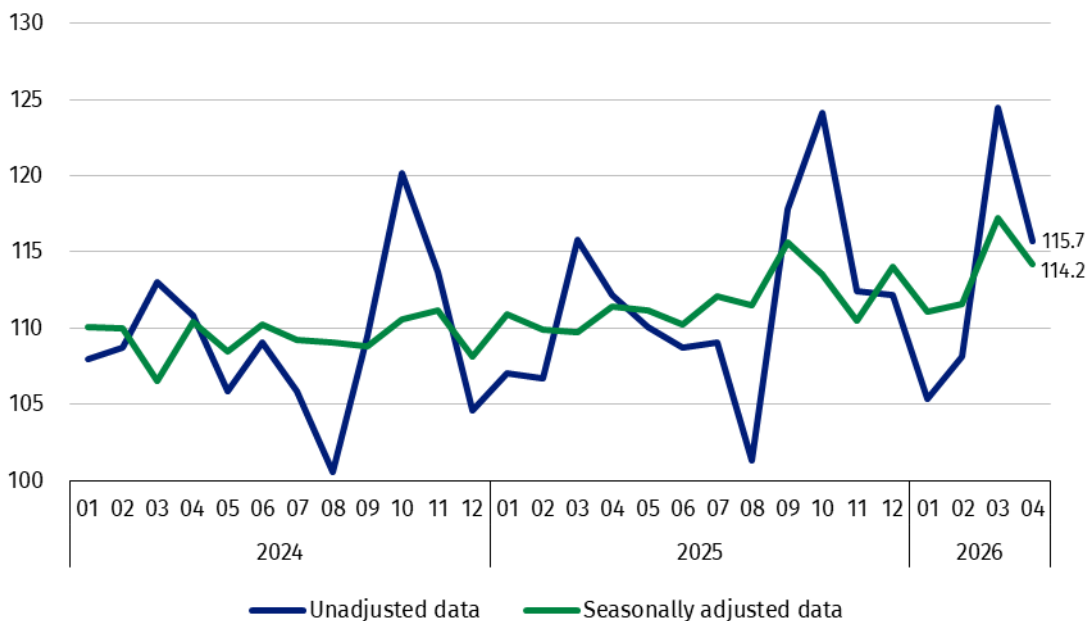
In April 2026, sold production of industry was by 3.1% higher than in April 2025 (when an increase was recorded by 1.2%), whereas in comparison with March 2026, it decreased by 7.4%. In the period January-April of 2026, sold production of industry was by 3.0% higher than in the corresponding period of 2025 (which saw an increase by 0.8%).

A significant decrease in sold production compared to March 2026 was caused by the base effect

After eliminating the seasonal factors, in April 2026 sold production of industry reached the level higher by 2.5% than in the corresponding month of 2025 and by 2.6% lower than in March 2026.

After seasonal adjustment, sold production of industry in April 2026 increased by 2.5% per year

**Chart 1. Sold production of industry (constant prices; monthly average of 2021=100)**



In April 2026, among the main industrial groupings there was an increase per year in the production of intermediate goods – by 7.3%, energy – by 4.1% and capital goods – by 3.0%. A decrease was observed in the production of durable consumer goods – by 7.9% and non-durable consumer goods – by 2.1%.

The highest y/y increase was recorded in the production of intermediate goods, while a decrease – in the production of durable consumer goods

<sup>1</sup> Preliminary data; comprise enterprises with 10 or more persons employed.

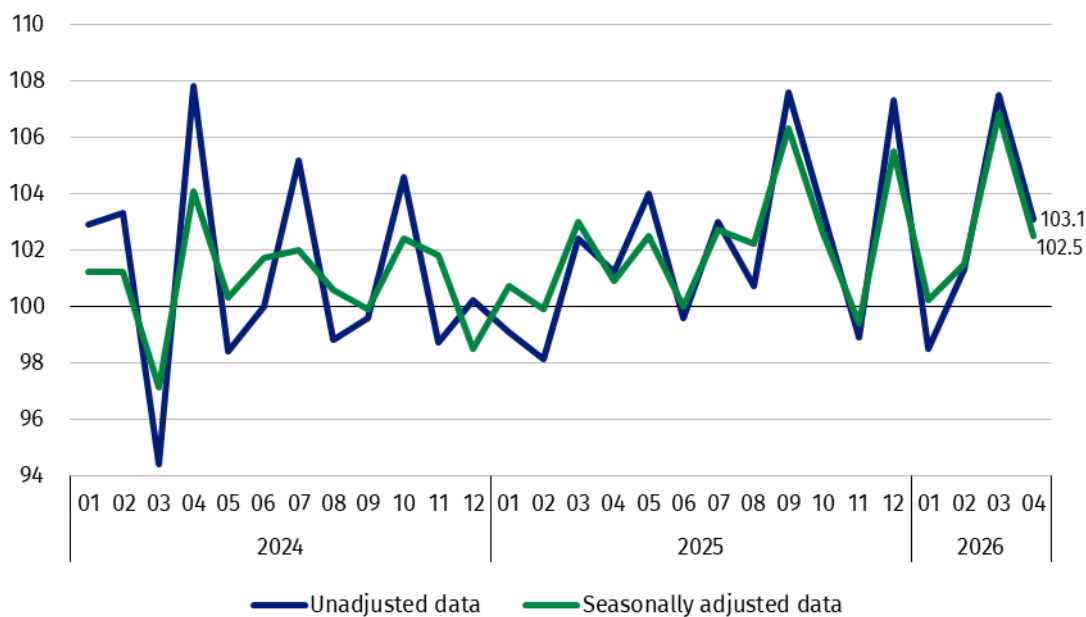
**Table 1. Sold production of industry<sup>a</sup> (constant prices; unadjusted data)**

SPECIFICATION	2026						
	03	04	03	04	01-04	03	04
	previous month =100		corresponding period of previous year = 100			monthly average of 2021 =100	
<b>INDUSTRY</b>	<b>115.2*</b>	<b>92.6</b>	<b>107.5*</b>	<b>103.1</b>	<b>103.0</b>	<b>124.5*</b>	<b>115.7</b>
Mining and quarrying	104.4*	99.2	120.7*	120.7	116.5	119.5*	118.6
Manufacturing	117.5*	92.1	107.1*	101.9	102.0	123.5*	115.4
Electricity, gas, steam and air conditioning supply	88.8*	91.0	107.1*	111.6	111.7	138.9*	111.6
Water supply; sewerage waste management and remediation activities	113.5*	106.2	109.7*	113.3	107.9	123.6*	131.2

a Data including final information on production and prices in March and preliminary data in April.

\* Data revised.

**Chart 2. Sold production of industry (constant prices; corresponding month of previous year=100)**

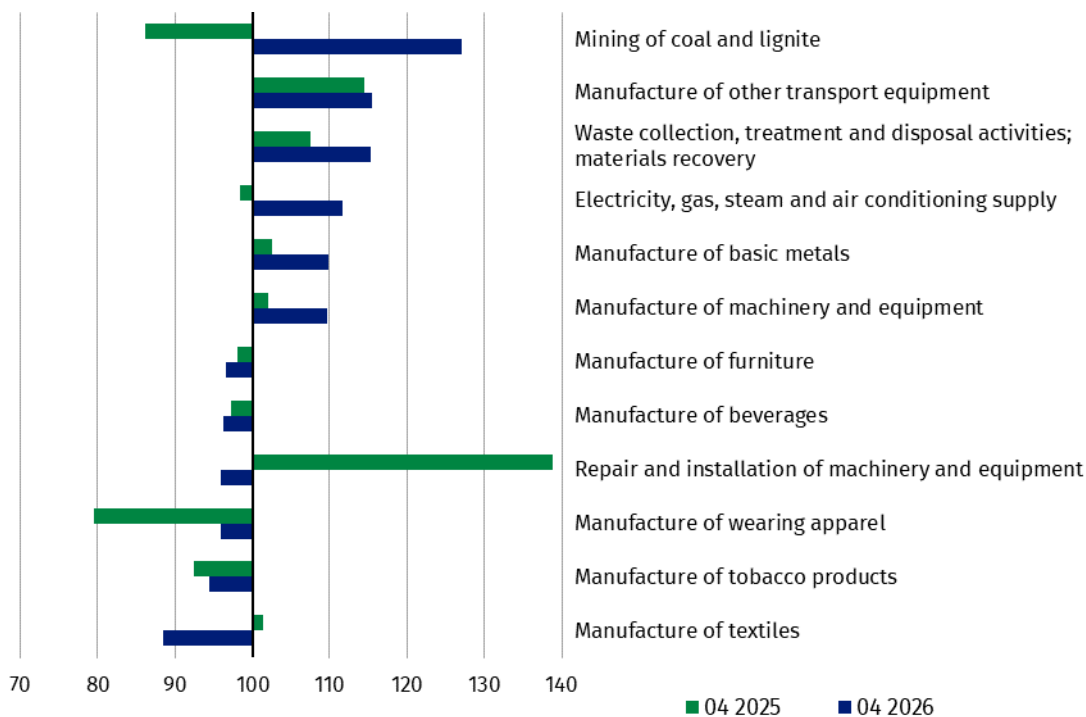


According to the preliminary data, in April 2026 an increase in sold production (in constant prices), compared to April 2025, was reported in 18 (out of 34) industry divisions, among others in mining of coal and lignite – by 27.1%, in manufacture of other transport equipment – by 15.5%, in waste collection, treatment and disposal activities; materials recovery – by 15.3%, in electricity, gas, steam and air conditioning supply – by 11.6%, in manufacture of basic metals – by 9.8%, manufacture of machinery and equipment – by 9.6%, manufacture of rubber and plastic products – by 9.3%, manufacture of other non-metallic mineral products – by 8.6%, manufacture of metal products – by 7.0%.

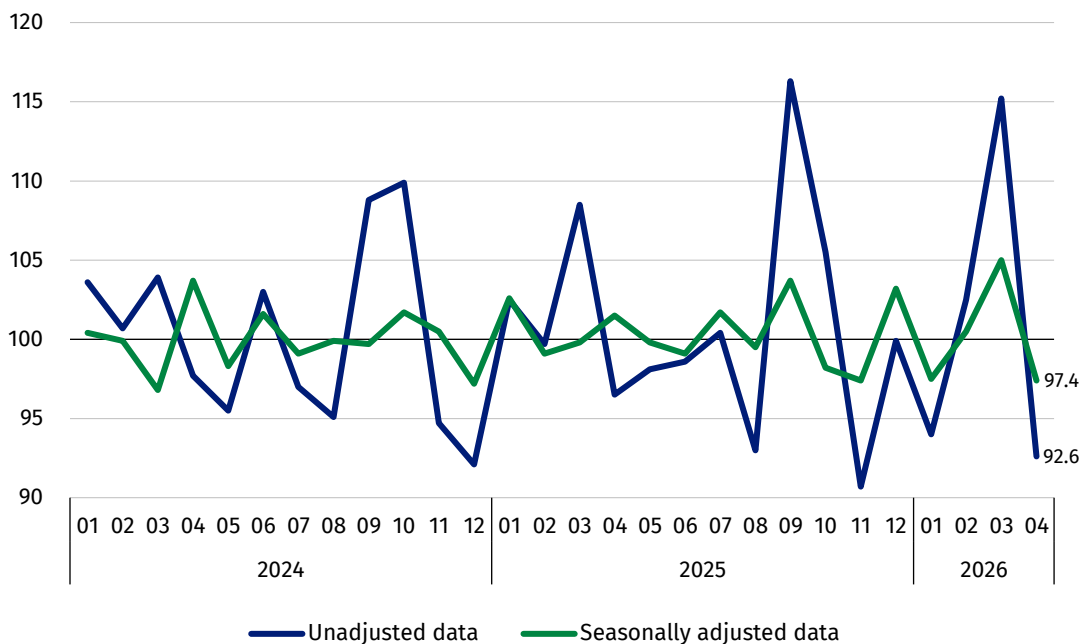
A decrease in sold production of industry, compared to April 2025, was recorded in 16 divisions, among others in repair and installation of machinery and equipment – by 4.0%, in manufacture of beverages – by 3.8%, manufacture of furniture – by 3.4%, manufacture of motor vehicles, trailers and semi-trailers – by 2.4%.

The share in total industry of sold production of divisions which recorded an increase per year amounted to 51.4%

**Chart 3. Sold production of industry by selected NACE Rev. 2 divisions  
(constant prices; corresponding month of previous year=100; unadjusted data)**



**Chart 4. Sold production of industry (constant prices; previous month=100)**

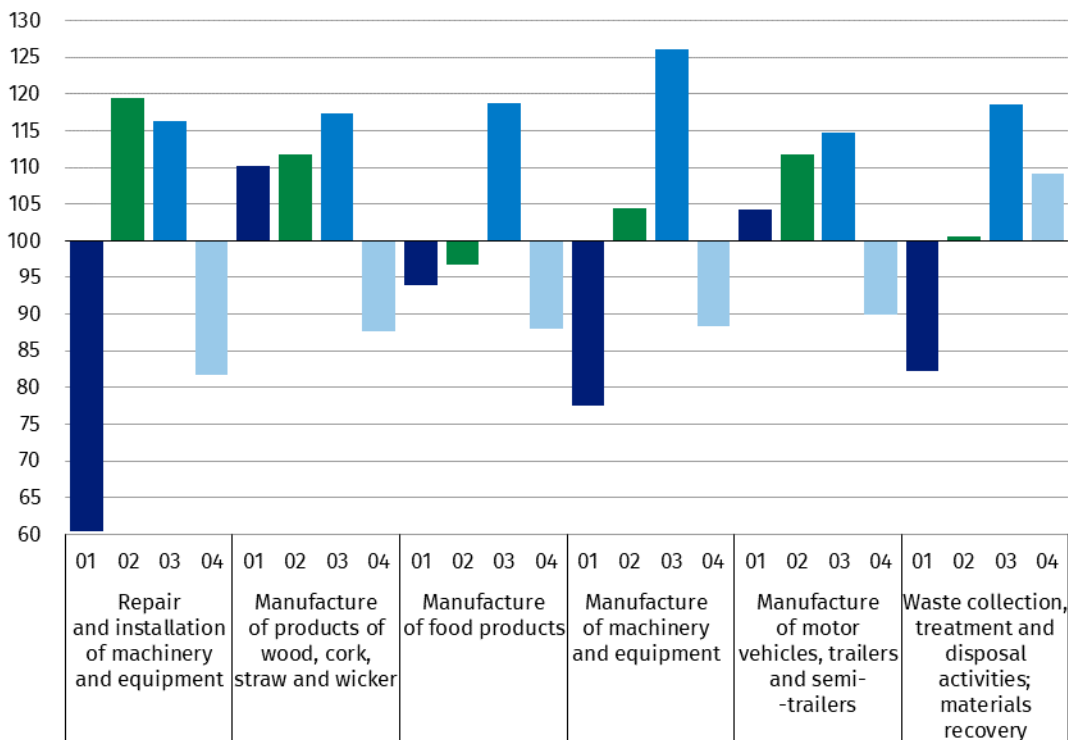


In April 2026, a decrease in sold production (in constant prices), compared to March 2026, was recorded in 26 (out of 34) industry divisions, among others in repair and installation of machinery and equipment – by 18.3%, in manufacture of furniture – by 12.4%, manufacture of products of wood, cork, straw and wicker – by 12.3%, manufacture of food products – by 12.0%, manufacture of machinery and equipment – by 11.7%, manufacture of motor vehicles, trailers and semi-trailers – by 10.1%, manufacture of other transport equipment – by 9.8%, in electricity, gas, steam and air conditioning supply – by 9.0%.

An increase in sold production of industry, compared to March 2026, was recorded in 8 divisions, among others in manufacture of tobacco products – by 9.9%, in waste collection, treatment and disposal activities; materials recovery – by 9.2%, in mining of coal and lignite – by 1.4%.

The share in total industry of sold production of divisions which recorded a decrease compared to March 2026 amounted to 94.9%

**Chart 5. Sold production of industry by selected NACE Rev. 2 divisions  
(constant prices; previous month=100; unadjusted data)**



**Methodological note**

Data presented in this news release concern entities with 10 or more persons employed, conducting economic activity classified according to the Polish Classification of Activities (PKD 2007/NACE Rev. 2) to Industry, i.e. to the following sections: ‘Mining and quarrying’, ‘Manufacturing’, ‘Electricity, gas, steam and air conditioning supply’, ‘Water supply; sewerage, waste management and remediation activities’.

Statistical unit, according to which the presented data are compiled, is a legal unit. Methodology of compiling data on sold production of industry is presented in the methodological report [Industrial production surveys](#).

In addition, for the needs of European statistics, data on industrial production are also compiled according to the kind-of-activity unit (KAU). The concept of the kind-of-activity unit is presented in the methodological report [Short-term statistics by European concept of the Kind-of-activity unit](#).

In case of quoting Statistics Poland data, please provide information: “Source of data: Statistics Poland”, and in case of publishing calculations made on data published by Statistics Poland, please include the following disclaimer: “Own study based on figures from Statistics Poland”.

Prepared by:  
**Enterprises Department**

**Director Katarzyna Walkowska-Macias**

Phone: (+48 22) 608 31 25

Issued by:

**Press Office**

Mobile +48 695 255 032

Phone +48 22 608 38 04, +48 22 449 41 45,  
+48 22 608 30 09

**e-mail: [obslugaprasowa@stat.gov.pl](mailto:obslugaprasowa@stat.gov.pl)**



[stat.gov.pl](http://stat.gov.pl)



[@GUS\\_STAT](https://twitter.com/GUS_STAT)



[@GlownyUrzadStatystyczny](https://www.facebook.com/GlownyUrzadStatystyczny)



[@gus\\_stat](https://www.instagram.com/gus_stat)



[@GlownyUrzadStatystycznyGUS](https://www.youtube.com/GlownyUrzadStatystycznyGUS)



[@Glowny Urząd Statystyczny](https://www.linkedin.com/company/Glowny-Urzad-Statystyczny)

#### **Related information**

[Statistical Bulletin](#)

[Socio-economic situation of the country](#)

[Methodological report. Industrial production surveys](#)

#### **Data available in databases**

[Knowledge Database - Industry](#)

[Macroeconomic Data Bank](#)

[Macroeconomic indicators](#)

[Local Data Bank](#)

#### **Terms used in official statistics**

[Sold production of industry](#)

[Seasonally un-adjusted index of sold production of industry](#)

[Seasonally adjusted index of sold production of industry](#)

[Production of capital goods](#)

[Production of non-durable consumer goods](#)

[Production of durable consumer goods](#)

[Production of intermediate goods](#)

[Production of goods related to energy](#)