

# Services Production in February 2026

18.05.2026

**↑ 7.0%**

Increase in services production, compared with February 2025

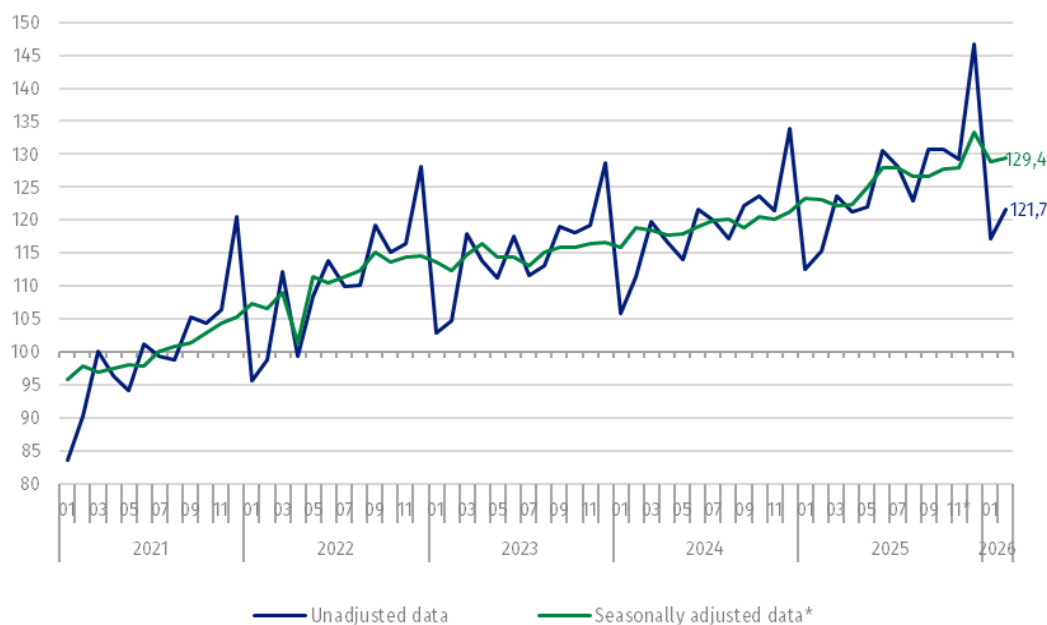
According to preliminary data, in February 2026 services production was higher by 7.0% than a year before (at that time, it was recorded an increase of 3.0%), and in relation to January 2026 increased by 4.5%.

Index of services production is the indicator measuring monthly changes in the volume of service production that is turnover in constant prices obtained on the market by service enterprises. The results apply to entities with 10 and more employees, which as their core activity provide services in the field of: transport and warehousing, accommodation and catering services, information technologies, data processing and other service activities in the field of information, real estate services, accounting activities, management, architecture and engineering, technical research and analysis, advertising and market research, rental and leasing, employment, tourism organisers, detective and security activities, maintaining order and cleaning inside and outside buildings of all types, and administrative office services.

After elimination of the impact of seasonal effects, in February 2026, services production was higher by 5.1% than in the corresponding month of the previous year, and in relation to January 2026 increased by 0.5%. Compared to monthly average production of services in 2021, services production increased by 29.4%.

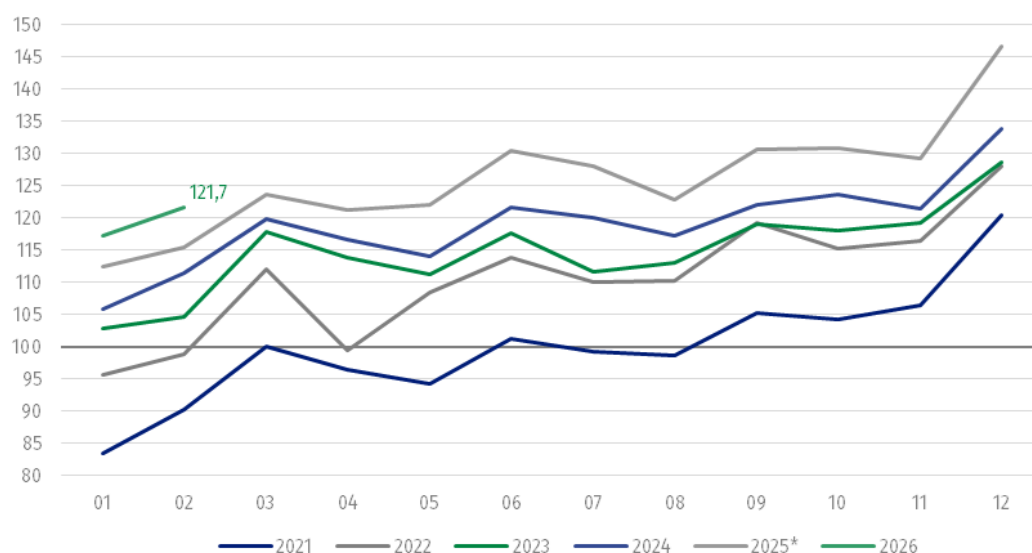
After seasonal adjustment, the year-to-year increase in services production in February 2026 amounted to 5.1%

**Chart 1. Services production (constant prices; monthly average 2021=100)**



\* Data revised.

**Chart 2. Services production (constant prices; monthly average 2021=100; unadjusted data)**



\* Data revised.

**Table 1. Dynamics of services production (constant prices; unadjusted data)**

Specification	01 2026	02 2026	01 2026	02 2026	01 2026	02 2026
	previous month=100		corresponding month of the previous year=100		monthly average 2021=100	
<b>TOTAL SERVICES</b>	<b>82.2</b>	<b>104.5</b>	<b>104.4</b>	<b>107.0</b>	<b>117.2</b>	<b>121.7</b>
Transportation and storage	91.5	102.3	103.2	106.5	110.8	112.3
Accommodation and food service activities	92.6	96.8	105.9	104.8	141.6	137.5
Information and communication	79.1	98.7	107.1	102.8	133.0	131.1
Real estate activities	73.6	100.4	105.5	111.0	105.1	106.6
Professional, scientific and technical activities <sup>1</sup>	64.9	123.3	107.0	121.2	107.4	132.4
Administrative and support service activities	90.6	103.7	98.6	101.2	108.5	112.8

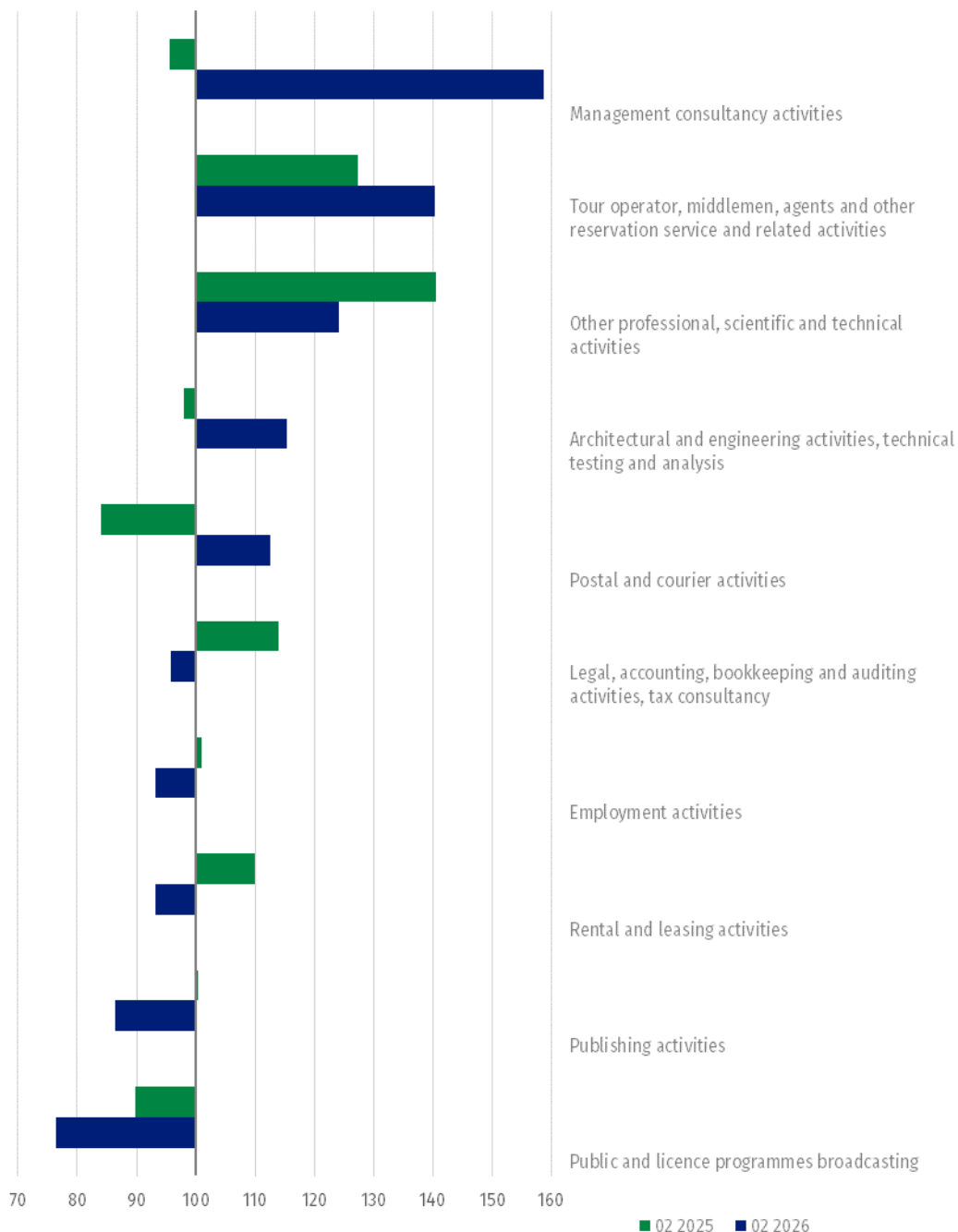
According to the preliminary data, in February 2026, in sections with the largest share in the total index, i.e. in Section J *Information and communication* and in Section H *Transportation and storage*, a year-to-year increase of 2.8% and 6.5%, respectively, was recorded.

<sup>1</sup> Professional, scientific and technical activities, excluding activities of head offices and holding companies, excluding financial holding companies (M70.1), scientific research and development (M72), and veterinary activities (M75).

On the level of divisions, the highest increase of services production in comparison with February 2025 was recorded in the field of management consultancy activities – of 58.7%, as well as in tour operator, middlemen, agents and other reservation service and related activities – of 40.3%.

The largest decrease in services production, however, occurred in public and licence programmes broadcasting – of 23.6% and in publishing activities – of 13.7%.

**Chart 3. Dynamics of services production in selected PKD 2007 divisions (constant prices; corresponding month of the previous year=100; unadjusted data)<sup>2</sup>**



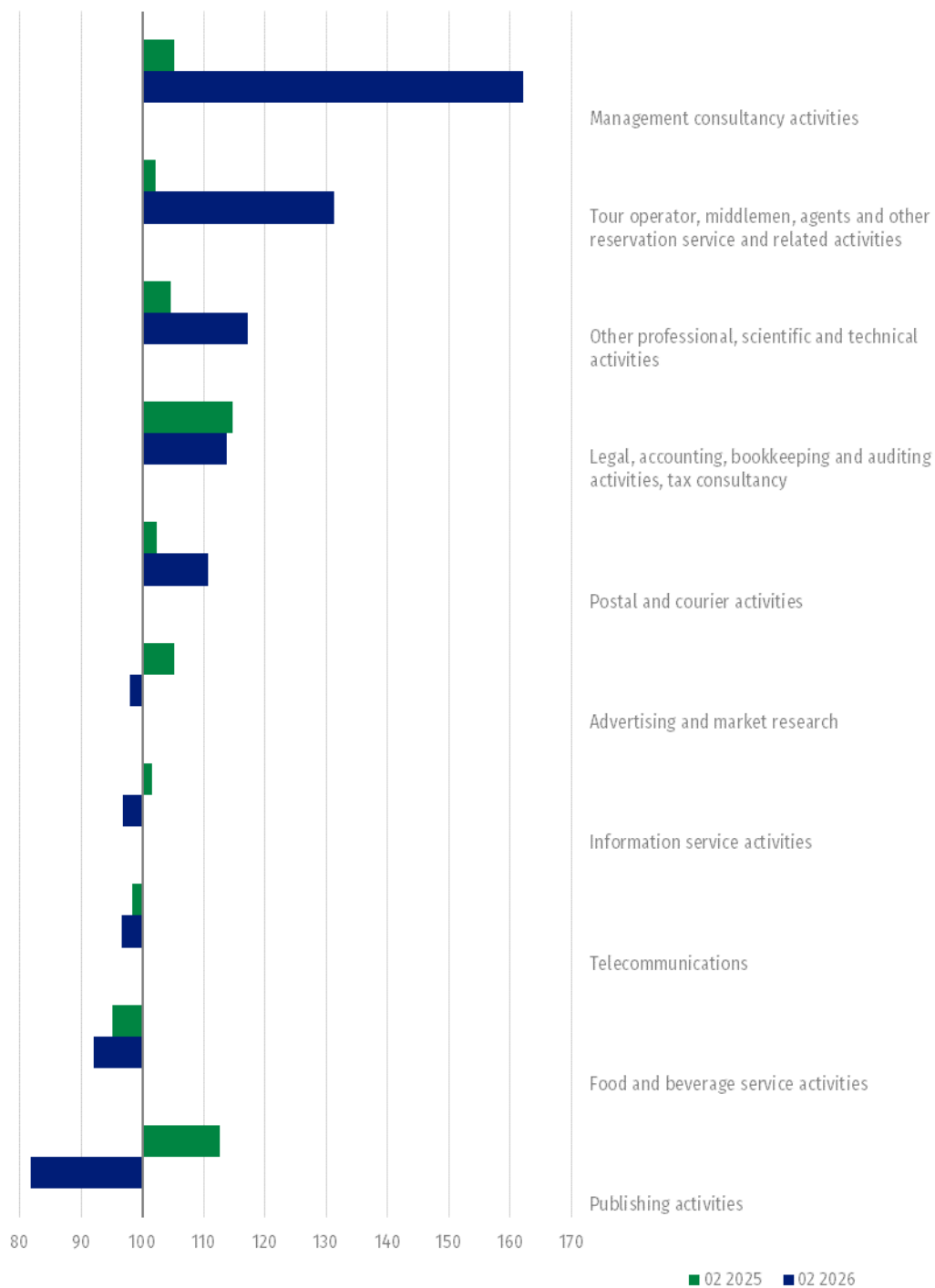
<sup>2</sup> Dynamics for all activities covered by the survey are presented in the enclosed XLSX file featuring charts. Dynamics of service production regarding water transport and air transport were not published due to statistical confidentiality.

Compared to the previous month, in February 2026, total services production increased by 4.5%. In Section J *Information and communication* a decrease of 1.3% was observed, while in Section H *Transportation and storage* – an increase of 2.3%.

On the level of divisions the only increase compared with January 2026 was observed in management consultancy activities – of 62.2 and in tour operator, middlemen, agents and other reservation service and related activities – of 31.3%.

The highest decrease was observed in publishing activities – of 18.2% and in food and beverage service activities – of 7.9%.

**Chart 4. Dynamics of services production in selected PKD 2007 divisions (constant prices; previous month=100; unadjusted data)<sup>2</sup>**



## Methodological note

In accordance with the Commission Implementing Regulation (EU) 2020/1197 of 30 July 2020 laying down technical specifications and arrangements pursuant to Regulation (EU) 2019/2152 of the European Parliament and of the Council on European business statistics repealing 10 legal acts in the field of business statistics, the aggregate "Production of services" includes the following service activities according to the Polish Classification of Activities (PKD 2007):

- section H *Transportation and storage*;
- section I *Accommodation and food service activities*;
- section J *Information and communication*;
- section L *Real estate activities*;
- section M *Professional, scientific and technical activities* excluding activities of head offices and holding companies, excluding financial holding companies (M70.1), scientific research and development (M72), and veterinary activities (M75);
- section N *Administrative and support service activities*.

Index of services production was developed based on the data from the following sources:

- DG-1 *Report on economic activity*;
- *SP Annual enterprise survey*;
- Survey on prices of consumer goods and services;
- Survey on services producer prices;
- Survey on prices of residential premises.

Due to the current methodology for developing the total index of services production, and index of services production for different levels of aggregation (PKD 2007 divisions and sections), it is not recommended to calculate the indexes in relation to the previous month and the corresponding month of the previous year based on the provided indicators in relation to the monthly average of annual base year (2021=100). Due to the use of the weighting system, the indicators will differ. The methodology for calculating the index of services production is consistent with the guidelines of the OECD manual ["Compilation Manual for an Index of Services Production"](#).

The data concern service entities with 10 or more employees. The basic statistical unit for which the above data was developed is the "legal unit". The definitions of statistical units, including the "legal unit", was specified in Council Regulation (EEC) 696/93 of 15 March 1993 on the statistical units for the observation and analysis of the production system in the Community.

When quoting Statistics Poland data, please provide the information: "Source of data: Statistics Poland", and when publishing calculations made on data published by Statistics Poland, please include the following disclaimer: "Own study based on figures from Statistics Poland".

Prepared by:  
**Prices and Services Statistics Department**  
**Director Ewa Adach-Stankiewicz**  
Phone: (+48 22) 608 31 24

Issued by:  
**Press Office**  
Mobile: (+48) 695 255 032  
Phone: (+48 22) 608 38 04, (+48 22) 449 41 45,  
(+48 22) 608 30 09  
e-mail: [obslugaprasowa@stat.gov.pl](mailto:obslugaprasowa@stat.gov.pl)

 [stat.gov.pl/en/](https://stat.gov.pl/en/)

 [@StatPoland](https://twitter.com/StatPoland)

 [@GlownyUrzedStatystyczny](https://www.facebook.com/GlownyUrzedStatystyczny)

 [@gus\\_stat](https://www.instagram.com/gus_stat)

 [@GlownyUrzedStatystycznyGUS](https://www.youtube.com/GlownyUrzedStatystycznyGUS)

 [@Glowny Urzed Statystyczny](https://www.linkedin.com/company/Glowny-Urzed-Statystyczny)

#### **Related information**

[Services Production in January 2026](#)

#### **Data available in databases**

[Knowledge Databases – Internal market – Services](#)

[Macroeconomic Data Bank – Monthly – Business services](#)

#### **Terms used in official statistics**

[Production of services](#)