

Price indices of construction and assembly production in June 2025

21.07.2025


2.9%

the growth of producer prices in construction in comparison with June 2024

According to preliminary data, in June 2025 the prices of construction and assembly production remained at a level similar to those recorded in the previous month, but increased compared to June 2024 (by 2.9%).

In June 2025 in comparison with the previous month the growth of prices was recorded in civil engineering (by 0.1%) construction of buildings, and in specialised construction activities remained at a level similar to those recorded in May 2025.

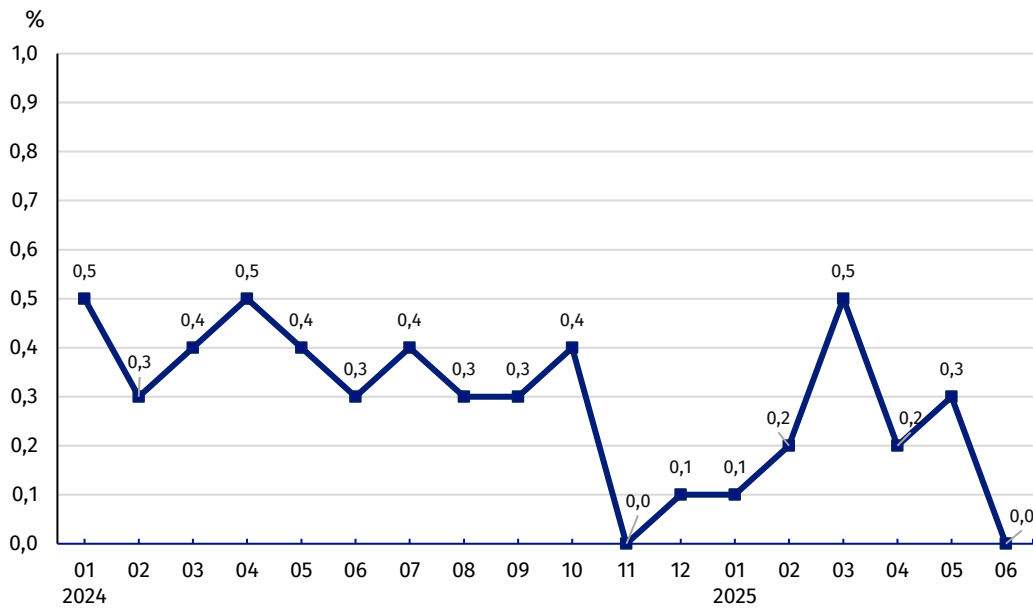
Compared to June 2024, prices for the civil engineering (by 3.1%), and construction of buildings (by 2.9%) as well as specialised construction activities (by 2.8%) have been increased.

Table 1. Price indices of construction and assembly production

Specification	05 2025		06 2025		01-06 2025
	04 2025=100	corresponding period 2024 = 100	05 2025=100	12 2024=100	01-06 2024=100
TOTAL	100.3	103.3	102.9	100.0	101.3
Construction of buildings	100.3	103.2*	102.9	100.0	101.3
Civil engineering	100.3*	103.4*	103.1	100.1	101.5
Specialised construction activities	100.2*	103.1	102.8	100.0	101.1

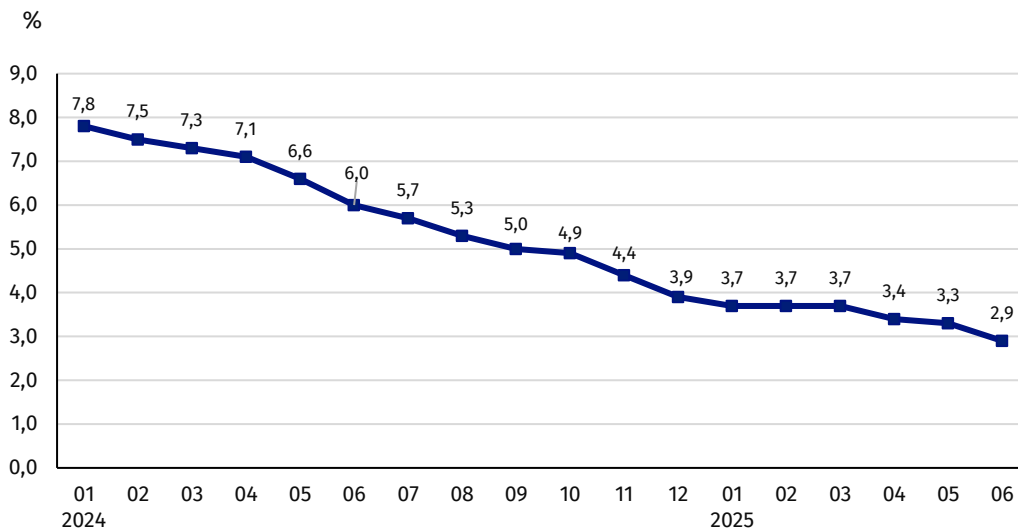
* Data revised

Chart 1. Prices changes of construction and assembly production compared to the previous month



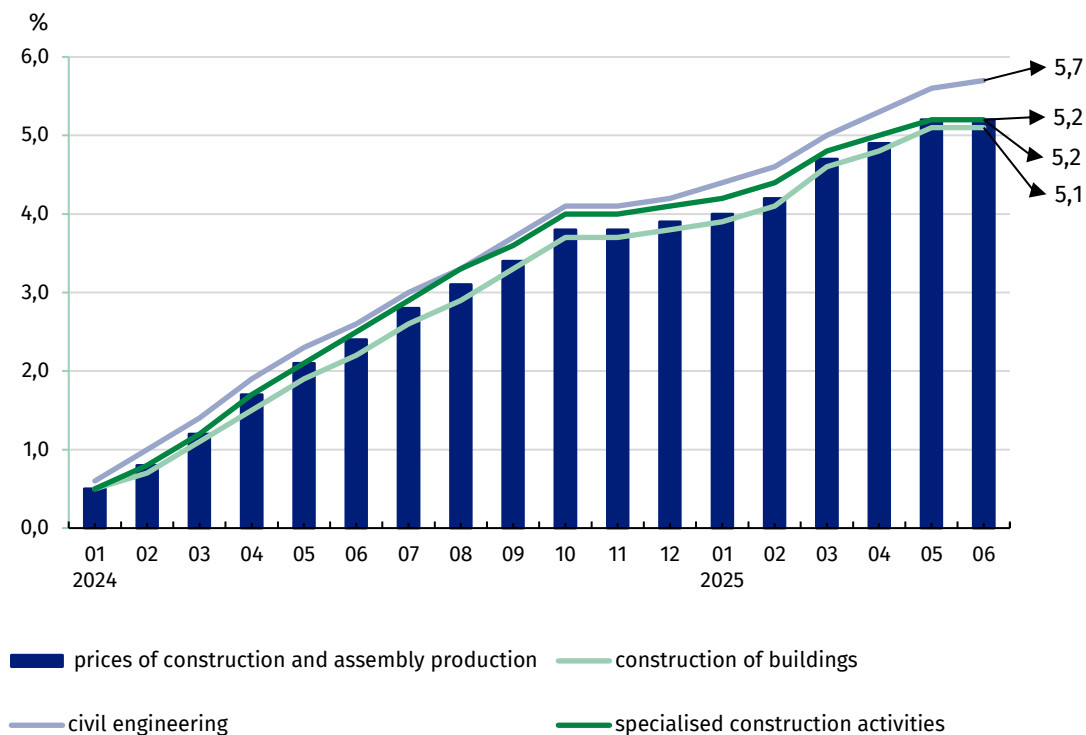
The prices of construction and assembly production in June 2025 remained at a level similar to those recorded in May 2025

Chart 2. Prices changes of construction and assembly production compared to the corresponding period of the previous year



In June 2025, the prices of construction and assembly production prices on an annual terms was lower than in the previous months

Chart 3. Prices changes of production and assembly construction by divisions NACE compared to December 2023









Among the construction divisions, in June 2025 compared to December 2023, the prices increased the most in the construction of civil engineering (by 5.7%)

In case of quoting Statistics Poland data. please provide information: "Source of data: Statistics Poland". and in case of publishing calculations made on data published by Statistics Poland. please include the following disclaimer: "Own study based on figures from Statistics Poland".

Prepared by:
The Trade and Services Department
Director Ewa Adach-Stankiewicz
Phone: (+48 22) 608 31 24

Issued by:
Press Office
Mobile: (+48) 695 255 032
Phone: (+48 22) 608 38 04, (+48 22) 449 41 45,
(+48 22) 608 30 09

e-mail: obslugaprasowa@stat.gov.pl

-  stat.gov.pl/en/
-  [@StatPoland](https://twitter.com/StatPoland)
-  [@GlownyUrzadStatystyczny](https://www.facebook.com/GlownyUrzadStatystyczny)
-  [gus_stat](https://www.instagram.com/gus_stat)
-  [glownyurządstatystycznygus](https://www.youtube.com/glownyurządstatystycznygus)
-  [glownyurządstatystyczny](https://www.linkedin.com/company/glownyurządstatystyczny)

Related information

[Statistical Bulletin](#)

[News Releases](#)

[Socio-economic situation of the country](#)

Data available in databases

[Analytical Platform - Knowledge Databases](#)

[Macroeconomic Data Bank](#)

[Prices indices \(Topics: Prices, Trade\)](#)

Terms used in official statistics

[Price index of construction and assembly production](#)